

Easy-IP AJAX Web Interface

Quick Start Guide

© 2008 Crypton Computers Ltd.

All rights reserved. No parts of this work may be reproduced in any form or by any means - graphic, electronic, or mechanical, including photocopying, recording, taping, or information storage and retrieval systems - without the written permission of the publisher.

Easy-IP and the Easy-IP logo are trademarks of Easy-IP Management Ltd. All other trademarks are the property of their respective owners.

While every precaution has been taken in the preparation of this document, the publisher and the author assume no responsibility for errors or omissions, or for damages resulting from the use of information contained in this document.

Printed: June 2008.

Table of Contents

Part I Preface	1
Part II Introduction	2
1 System Requirements	2
2 Installation	2
3 Configuration	3
4 Getting Started	4
Part III Troubleshooting	5

1 Preface

This Quick Start Guide helps you install and configure the Easy-IP AJAX Web Interface.

The main topics include:

- Installation
- Configuration
- Getting Started
- Troubleshooting

For a complete description of all Easy-IP features, please see the Help files for this application.

2 Introduction

The Easy-IP AJAX Web Interface allows you to access the Easy-IP database from any Web Browser regardless of location. The AJAX Web Interface delivers the look & feel, usability and performance of a desktop application.

All major the functionality such as Add/Delete Subnets & IP Addresses, Edit IP Records, Grouping & Sorting, Host Discovery, Database Searching and even Reporting are all available directly from the Web Browser.

2.1 System Requirements

For best results with the AJAX Web Interface, the following items should be pre-installed.

- Microsoft IIS 6.0 (or later)
- ASP .NET Framework 2.0 (or later)
- Microsoft IE6 or IE7, or compatible browser, (e.g. Firefox 2.x, Opera, etc)

If Microsoft IIS 6.0 is not installed, then the AJAX Web Interface will not be installed.

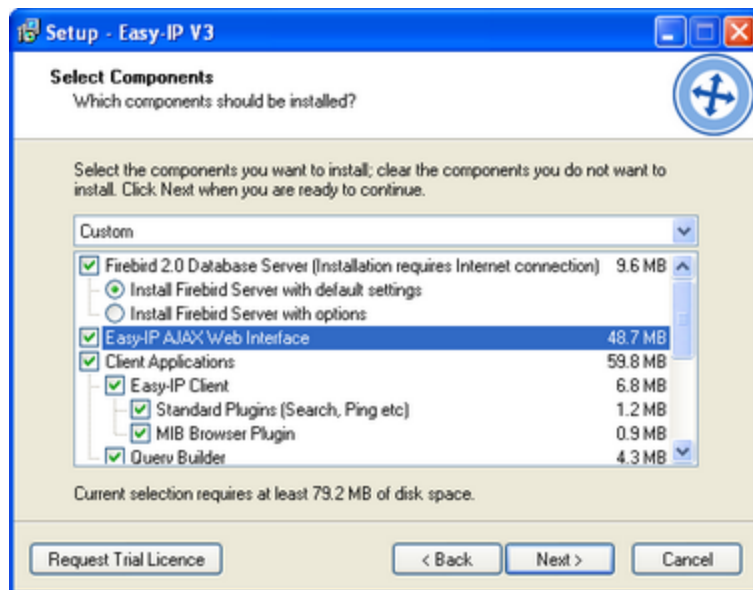
If .NET Framework 2.0 is not installed, then Easy-IP will download and install it automatically.

2.2 Installation

Installation requires Windows Administrator privileges.

To install the AJAX Web Interface:

Run the Easy-IP Setup file, check the box marked **AJAX Web Interface** and follow the instructions prompted by the installation program.

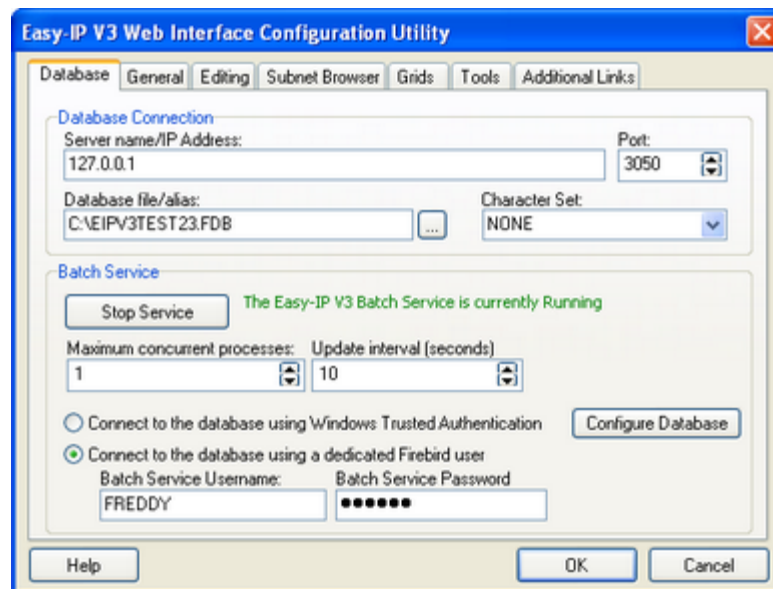


2.3 Configuration

Configuration of the AJAX Web Interface is performed via the AJAX Web Interface Settings program. Go to Windows > Start > AJAX Web Interface Settings.

The default settings should be sufficient for most users, but you may need to change the following items.

To configure the Database Settings, select the Database Tab.



In the Database Connection section, enter the following:

1. Server Name or IP Address where Easy-IP is installed.
2. TCP Port Number used by Easy-IP. The default is **3050**.
3. The full path and filename (or Alias) of your Easy-IP Address Database. The default is C:\EASYIPV3.FDB.
4. Select the desired character set from the dropdown list. The default is **NONE**.

Note: There is no need to change the default character set unless you have a specific need for it.

2.4 Getting Started

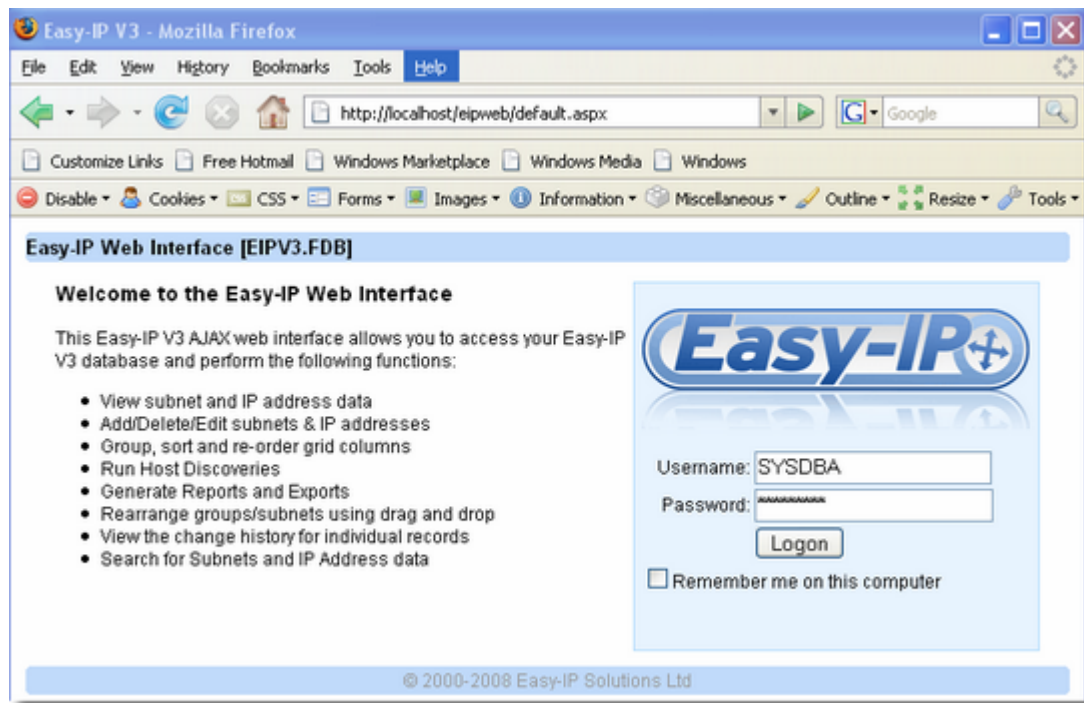
To connect to your database via the AJAX Web Interface, open your Web Browser and enter the following URL:

`http://localhost/eipweb/default.aspx`

You may have to change localhost to the server name or the IP Address where Easy-IP is installed.

(For example, `http://192.168.1.1/eipweb/default.aspx`
or `http://<servername>/eipweb/default.aspx`)

You will see the initial login screen.



The default login information is as follows:

Username : SYSDBA
Password: masterkey

Once logged in you will see the AJAX Web Interface.

3 Troubleshooting

If you receive any error messages or encounter any problems, first check the following items have been installed:

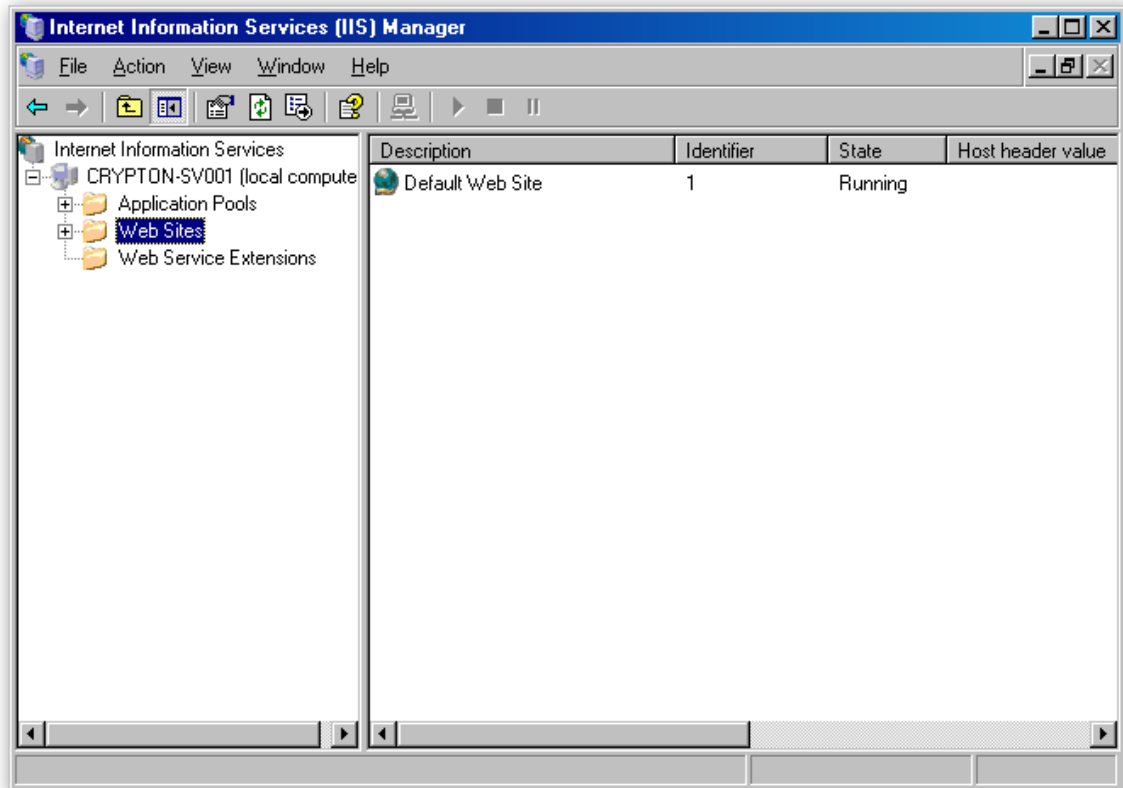
- Easy-IP v3.2.x (or later)
- Firebird SQL 2.x Database Server
- Microsoft IIS 6.0 (or later) with ASP enabled.
- Microsoft .NET Framework 2.x (or later).

Then, double-check you have configured the AJAX Web Interface settings correctly.

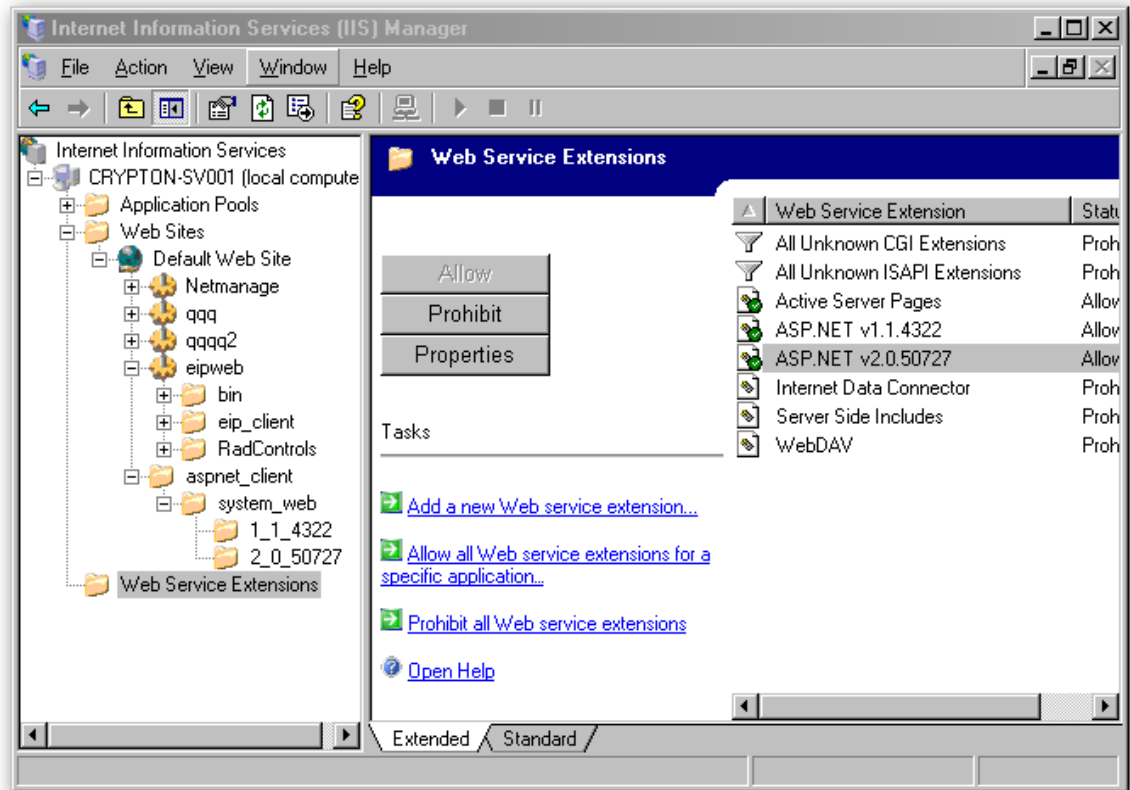
If you do not see the Easy-IP login screen, try these quick troubleshooting tips.

Open IIS Manager by selecting it from Programs ->Administrative Tools->Internet Information Services Manager.

Go to the **Web Sites** node and check the the Default Web Site State is **Running**.



Go to the **Web Service Extensions** node and check that **Active Server Pages** is **Allowed** and **ASP.NET v2.x** is **Allowed**.



When you build Windows 2003 R2 SP2 server – by default it has Microsoft.NET Framework 2.0 Service Pack 1 and Microsoft .NET Framework 3.0 Service Pack1 installed. You will notice ASP.NET v2.0.50727 may be missing in Web Services Extension in IIS manager.

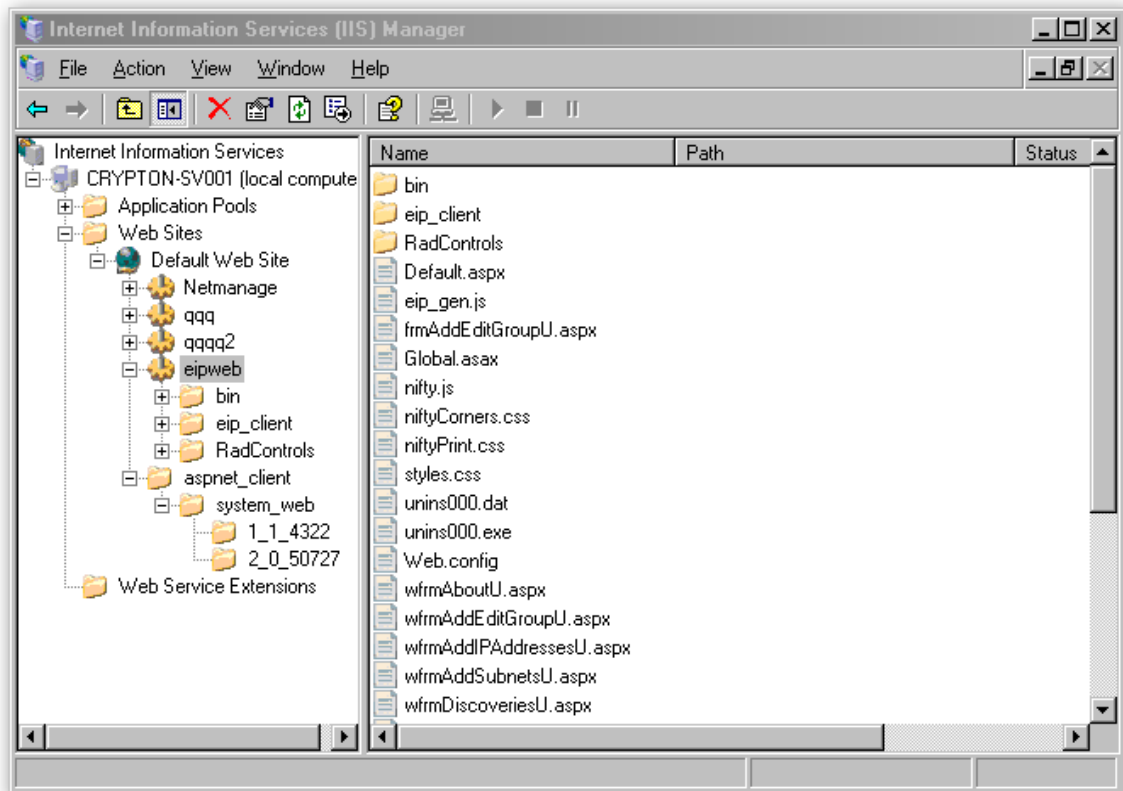
To make ASP .NET 2.x appear, start a DOS window – change to the following directory

```
C:\WINDOWS\Microsoft.NET\Framework\v2.0.50727>
```

Type `aspnet_regiis.exe -i`

ASP.NET 2.x should register itself and show up in Web Service Extensions.

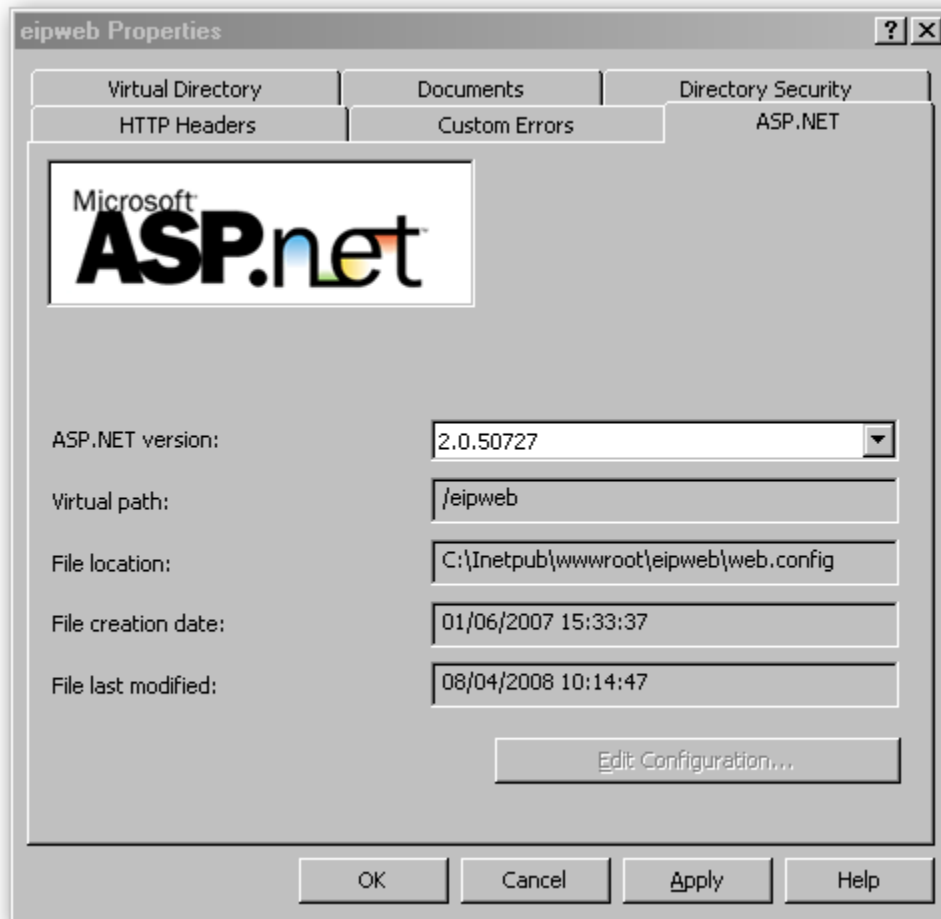
Expand the **Web Sites >Default Web Site** node and select the **eipweb** node.
Check the eipweb files have been installed.



Expand the Web Sites node and select the eipweb node.
Right-Click>**Properties** and go to the **ASP.NET** tab.

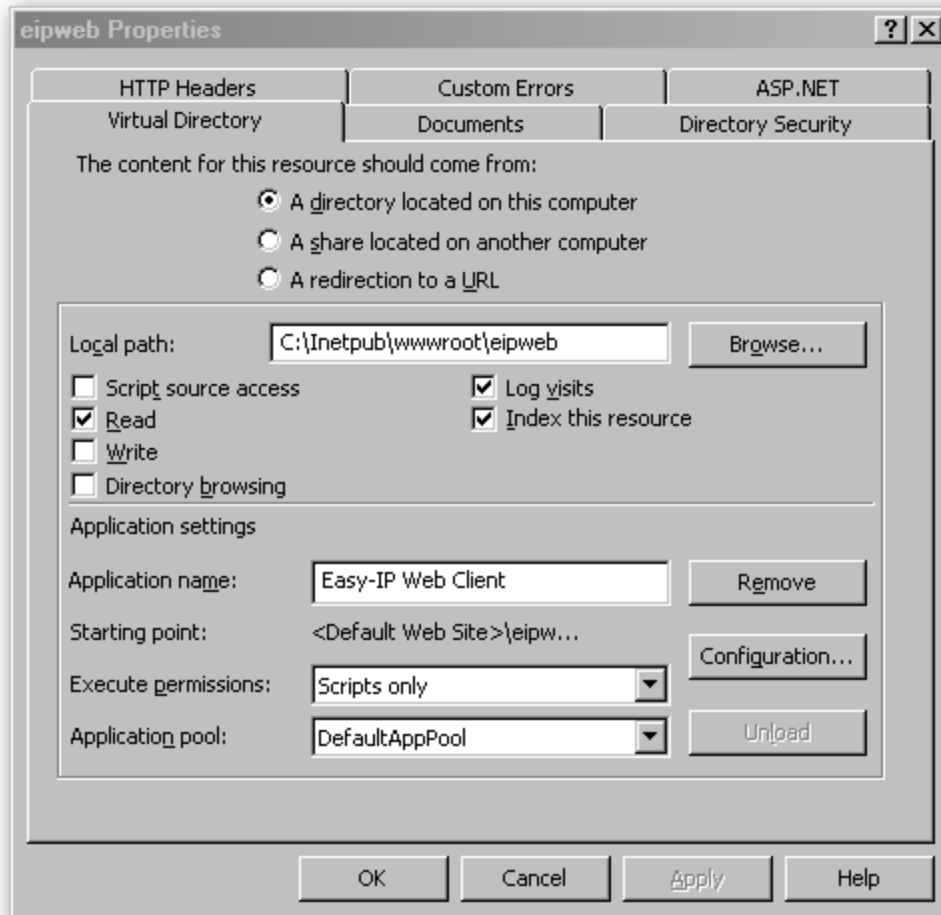
Check the following:

- The ASP version is 2.x or later
- The virtual path is set to /eipweb
- The file location is C:\inetpub\wwwroot\eipweb\web.config

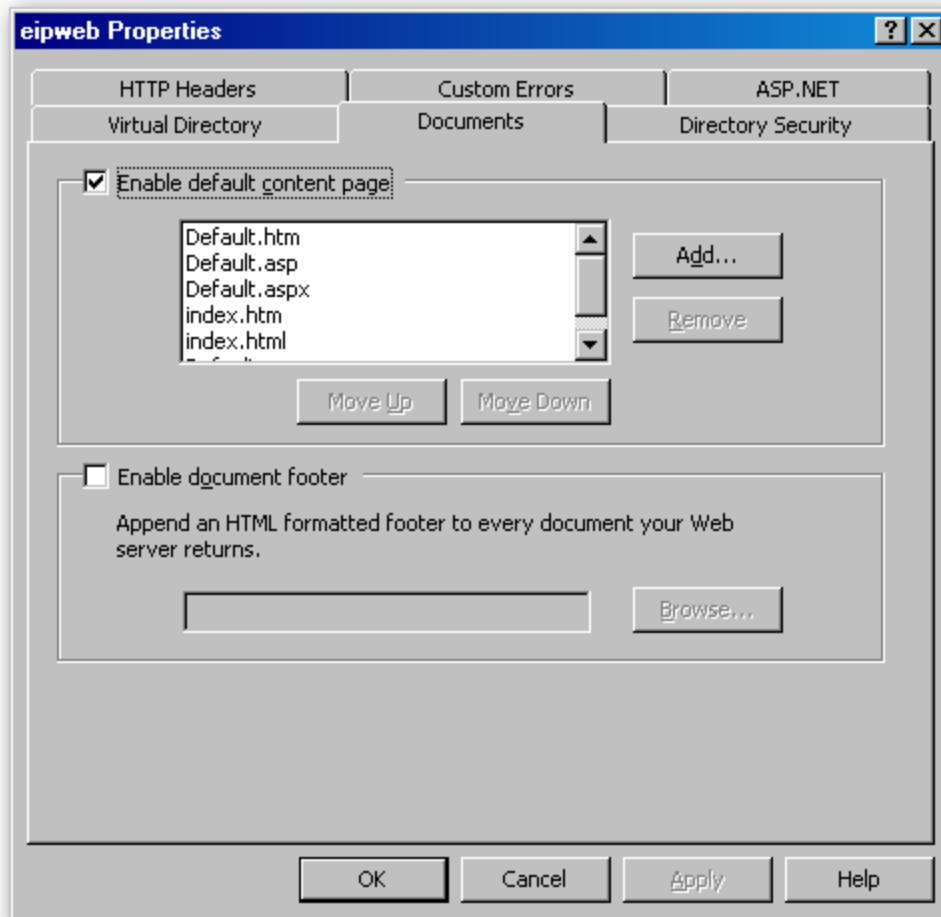


Expand the Web Sites node and select the eipweb node.
 Right-Click>**Properties** and go to the **Virtual Directory** tab.

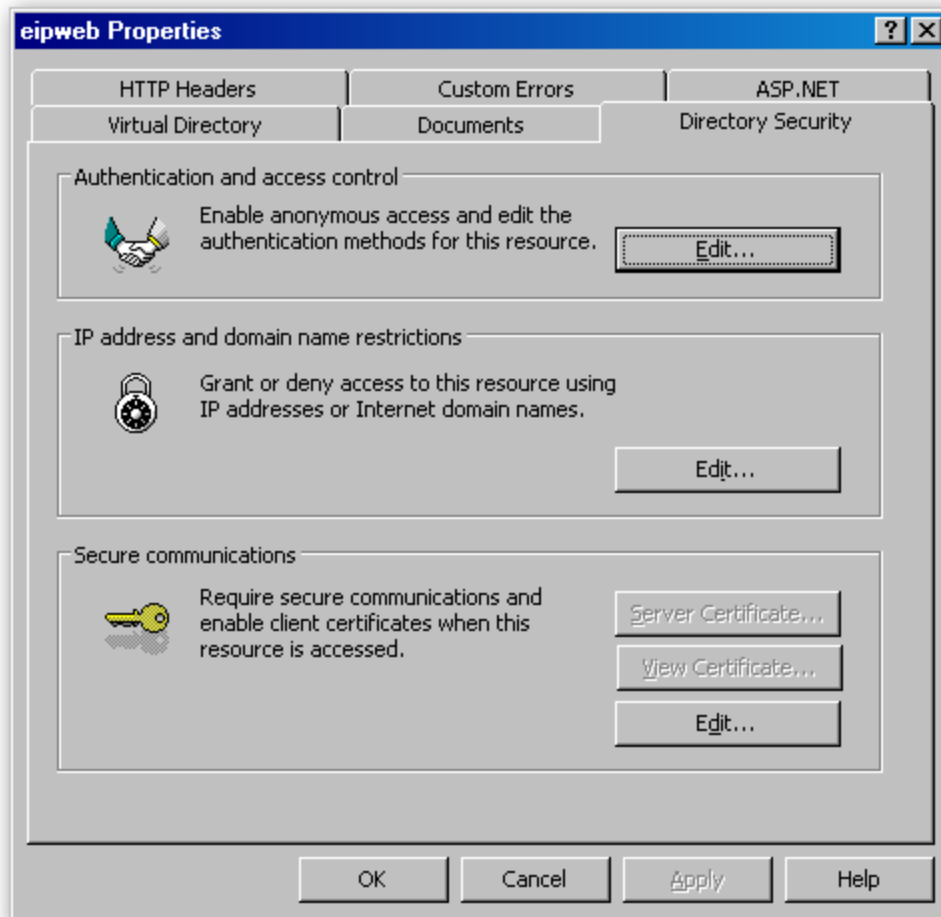
Check the local path is set to **C:\inetpub\wwwroot\eipweb**



Go to the **Documents** tab and check that **default.aspx** is in the content page list.



Go to the **Directory Security** tab.



Click Authentication and Access Control **Edit** button to check that **Anonymous Access** is enabled.

Authentication Methods

Enable anonymous access

Use the following Windows user account for anonymous access:

User name:

Password:

Authenticated access

For the following authentication methods, user name and password are required when:

- anonymous access is disabled, or
- access is restricted using NTFS access control lists

Integrated Windows authentication

Digest authentication for Windows domain servers

Basic authentication (password is sent in clear text)

.NET Passport authentication

Default domain:

Realm:

Then click the **Edit** button for IP Address and Domain name restrictions. Ensure that all computers in your domain will be granted access.

